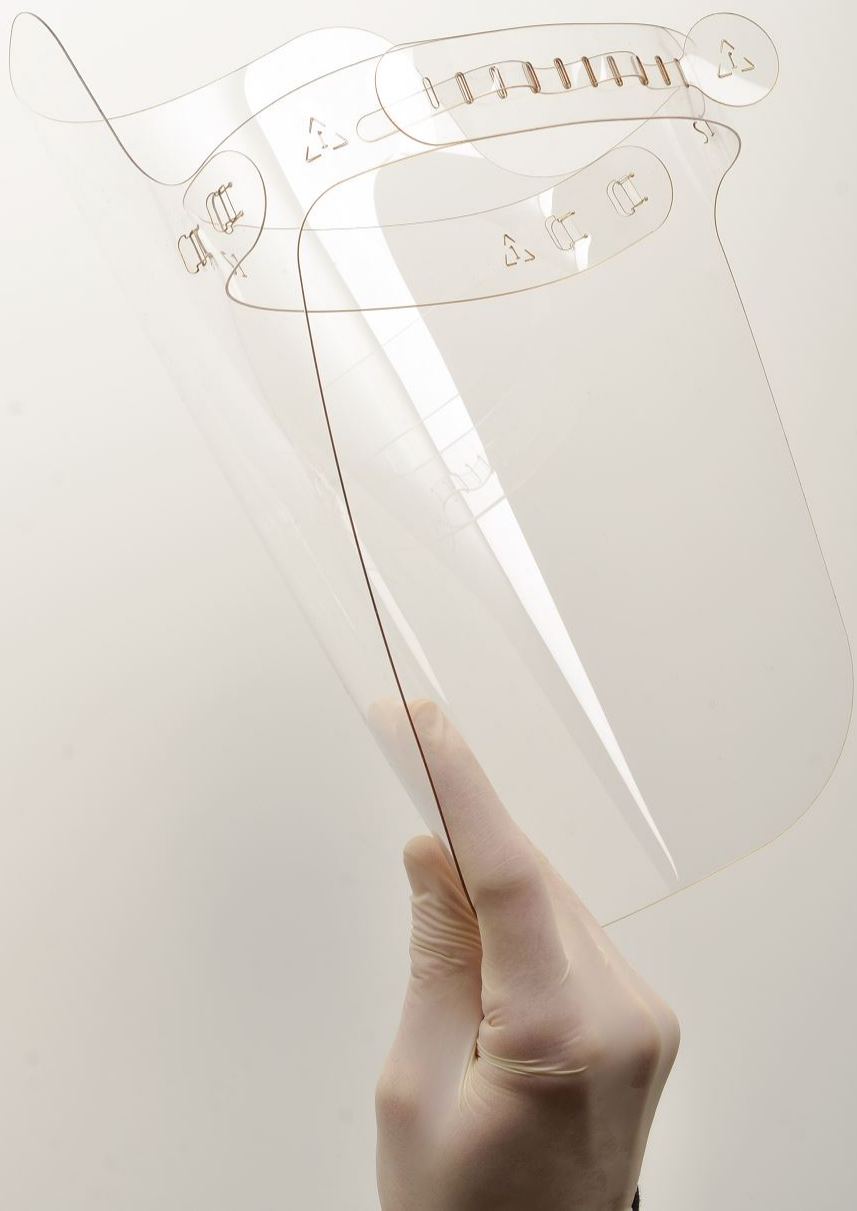




Aura™ 80134
Respiratory Filter Mask II
CE 0006



UNIBZ SHIELD S1

The PPE UNIBZ SHIELD S1 is a safety visor that provides protection for the operator's face (eyes and mucous membranes) from droplets or splashes of potentially dangerous liquid according to EN 166:2001 (section 7.2.4).

The PPE may also be worn over other PPEs providing protection for potentially dangerous aerosols (such as goggles and/or filter face masks) in order to provide additional protection from droplets or splashes of liquid, as required by the recent guidelines of the Istituto Superiore della Sanità of 28 March 2020.

Performance in the technical tests and regulatory references:

The PPI "UNIBZ SHIELD S1" has been tested and certified as category II PPE according to the norm EN 166:2001 by Certottica S.c.r.l.

In particular, the following tests were carried out: general construction (section 6.1 of the above standard), headband (section 6.3), field of vision (section 7.1.1), spherical, astigmatic and prismatic refractive powers (mounted and unmounted eyepieces covering both eyes - section 7.1.2.1.2); eyepieces without filtering action - section 7.1.2.1), light diffusion (section 7.1.2). (3), material and surface quality (section 7.1.3), increased strength (unmounted eyepieces - section 7.1.4.2.1; complete eye protectors and mountings - section 7.1.4.2. (2), high temperature stability (section 7.1.5.1), resistance to ultraviolet radiation (eyepieces only) (section 7.1.5.2), resistance to ignition (section 7.1.7) and protection against droplets and splashes of liquids (section 7.2.4).

All tests have been passed by the PPE and the visor has obtained optical class 1.

The PPE has also been designed and manufactured according to EU Regulation 2016/425.

Storage and maintenance instructions

The PPE should be stored in a dry place away from solar radiation. It should be transported in its original packaging and stored at a temperature of 5° ~ 40°C, with humidity < 80%.

The PPE is made out a scratch sensitive material. It should therefore be stored and handled with care.

Before use the PPE should always be stored with its protective foil intact. Once used, the PPE could be stored either as a flat sheet (unassembled) or assembled with either back strap open or closed.

If the PPE is stored after use as a flat sheet (unassembled), both sides should be protected by a soft material (cloth, soft paper). This is especially important if several PPE are stored flat over each other.

If the PPE is stored assembled, make sure to place it in an upright position. Never place the PPE on its front, avoiding scratches and damages to the visor surface.

If several PPE are stored assembled, make sure to place a soft material (cloth, soft paper) between them, always making sure the visor surface is well protected.

The PPE has no expiration date as it strongly depends on its use and proper storage. The PPE should however be replaced when one of the components show signs of wear or damage and/or there are damages that impede or obstruct the vision.

The PPE should in any case be discarded after 5 years.

The PPE should not be modified or altered by the user or by any other subject.

Contact the manufacturer for more information on this PPE.

Cleaning and disinfection instructions

Always use soft cloth for cleaning and disinfecting, making sure you are not scratching or rubbing the surface in a manner that damages it.

It is recommended to disassemble the PPE and disinfect it in when all parts are flat and not overlapping each other.

Make sure to disinfect all the parts and all surfaces of the PPE from all sides.

After each use, disinfect the PPE with one of the following: IPA - isopropyl alcohol (min. 75%), ethanol (min. 78%) and virucidal solutions, disinfect for at least 5 minutes.

WARNINGS

Make sure to test any new disinfectant solution before using it! Apply it on the edge of one of the back straps, wait for a while and check if the disinfectant has damaged the surface.

Inspect the visor before each use. Replace immediately if there is any sign of damage including scratched lenses.

Materials which come into contact with the wearer's skin could cause allergic reaction to susceptible individuals.

If the symbol F, B and A are not common to both the oculars and the frame then it is the lower which shall be assigned to the complete eye protector.

If protection against high speed particles at extremes temperatures is required then the selected eye protector shall be marked with the letter T immediately after the impact letter, i.e. FT, BT, AT. If the impact letter is not followed by the letter T, then the eye protector shall only be used against high speed particles at room temperature.

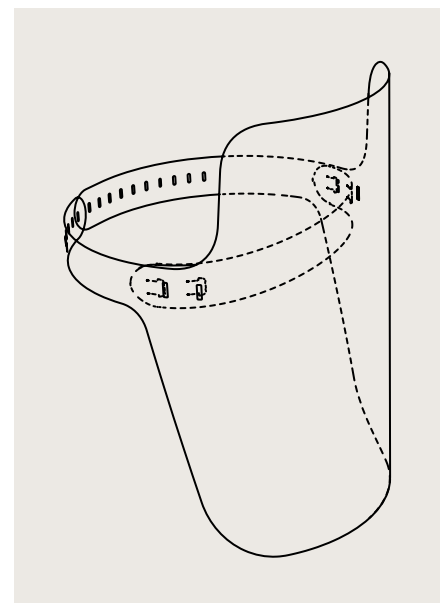
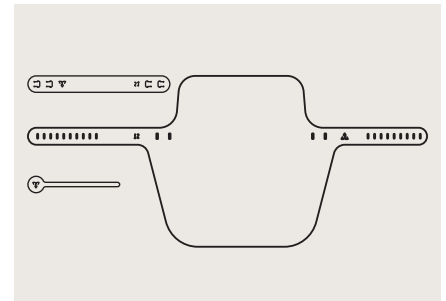
Eye protectors against high speed particles worn over standard ophthalmic spectacles may transmit impact energy, creating a hazard to the wearer.

Marking: UNIBZ 1 S - EN 166 3 S

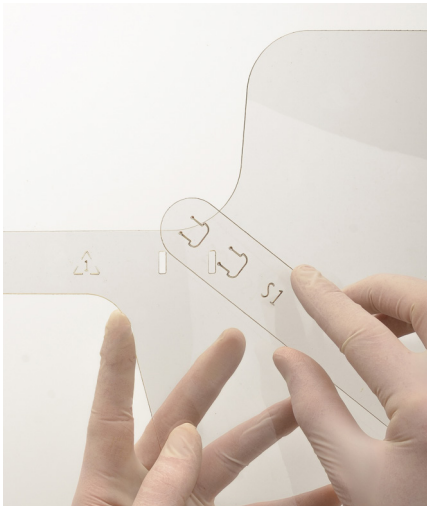
Manufacturer Optical Class Mechanical Strength.
Applied standard Range of use Resistance mechanics

Producer: UNIBZ Free University of Bozen/Bolzano
Optical class: 1 > Continuous use (0.06D)

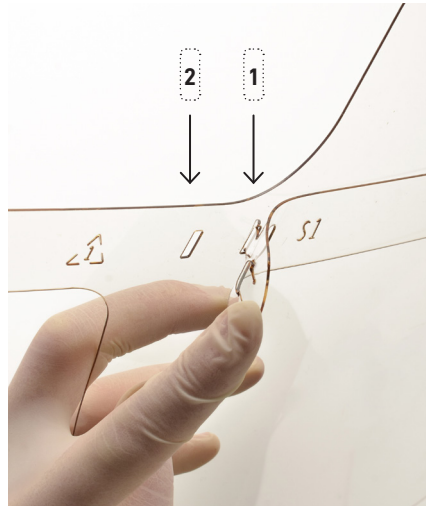
Mechanical resistance: S > Increased robustness
Field of use: 3 > Liquids (protection against drops or splashes of liquid).



Assembly and wearing instructions



- + **Important:** Disinfect the PPE before assembly and first use (for disinfection instructions see 'Cleaning and disinfection instructions').
- + Make sure that the visor is correctly mounted, fitting well and correctly positioned to protect the face of the user.



Mounting the Front Strap

Orientation -

The front-strap is positioned in the middle of the visor with the front strap 'arrows' pointing to the center.



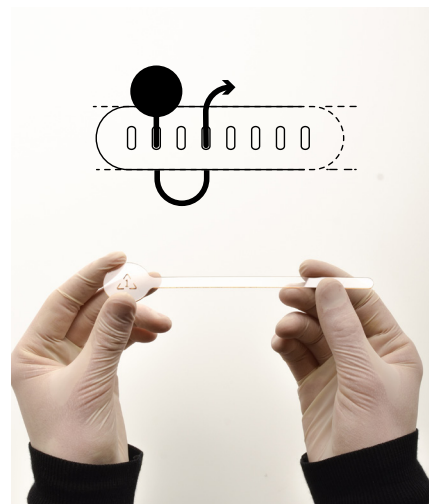
Mounting -

Start by connecting one side of the front strap to the visor, make sure to connect the internal arrow (1) first, inserting it to the slot in a diagonal turn so that you first fit one side of the arrowhead and then the other one.

Once both arrows of one side are mounted and fit well inside their slots, do the same for the other side, making sure to again start with the internal arrow.

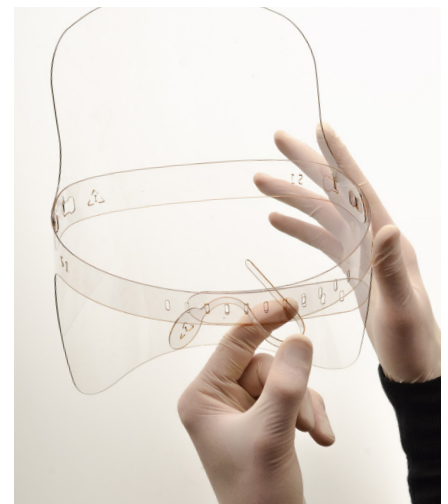


Adjusting Head Perimeter and Locking the Shield



The shield should fit not too tight on your head but sit comfortably.

- + Try it first: put the shield on your head, adjust the straps in a position that feels tight enough and hold it there while you take down the shield.
- + Use the key to lock the back straps in the right position: push the key all the way through the most external hole possible (on either side). Make sure to pass all the key length through so the round head is touching the strap.



Important: the key should always pass through every second hole (as illustrated).

As you are now just checking the size, pass the key only through two holes, put on the shield and see if the size is right.

Once the shield fits comfortably, complete the locking by passing the key all the way through the back straps (every second hole) so that the complete key length is 'sawn' through the back straps.