



# DIGITAL INNOVATION IN RESPONSIBLE TOURISM

---

AT HISTORIC ENVIRONMENT SCOTLAND

@ ERRIN: TOWARDS ZERO POLLUTION TOURISM, EU GREEN WEEK PARTNER EVENT

Vanessa Glindmeier, 07 June 2021



HISTORIC  
ENVIRONMENT  
SCOTLAND

ÀRAINNEACHD  
EACHDRAIDHEIL  
ALBA



# MAESHOWE AND THE HEART OF NEOLITHIC ORKNEY

Maeshowe Chambered Cairn is part of the Heart of Neolithic Orkney WHS, together with the

- Village of Skara Brae
- Standing Stones of Stenness
- Ring of Brodgar



HISTORIC  
ENVIRONMENT  
SCOTLAND

ÀRAINNEACHD  
EACHDRAIDHEIL  
ALBA

# MAESHOWE CHAMBERED CAIRN

Stand in awe of one of Europe's finest chambered tombs, built some 5,000 years ago. Incredibly, the entrance passage to Maeshowe is aligned with the setting of the midwinter sun, so that the light illuminates the chamber inside.

This app will take you through a virtual recreation of Maeshowe exploring the inside and outside of the tomb and learn more about its history.



HISTORIC  
ENVIRONMENT  
SCOTLAND

ÀRAINNEACHD  
EACHDRAIDHEIL  
ALBA

Enter



Explore Landscape >



Explore Inside >

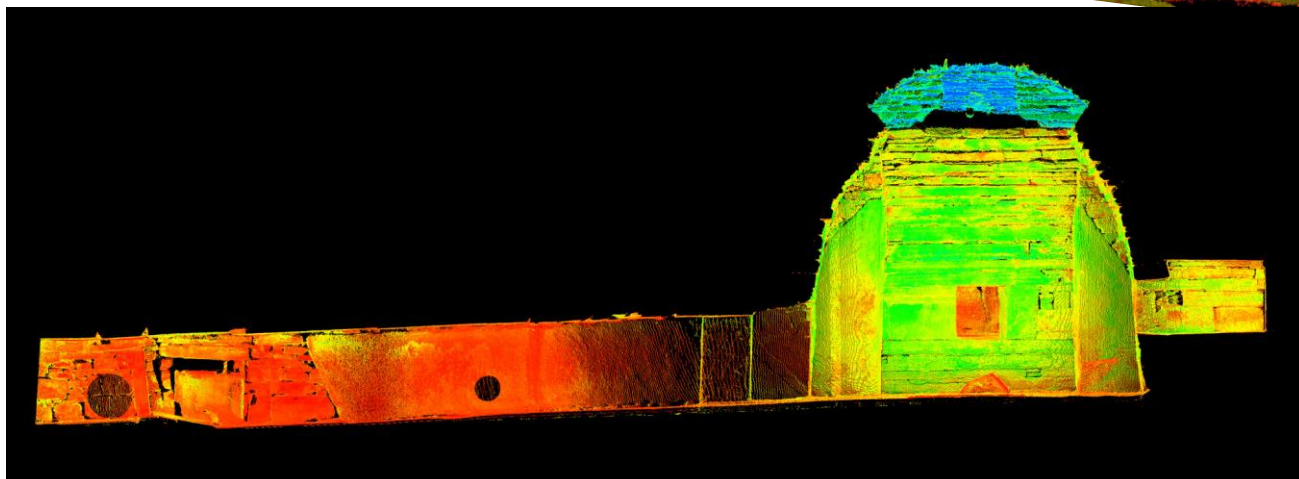
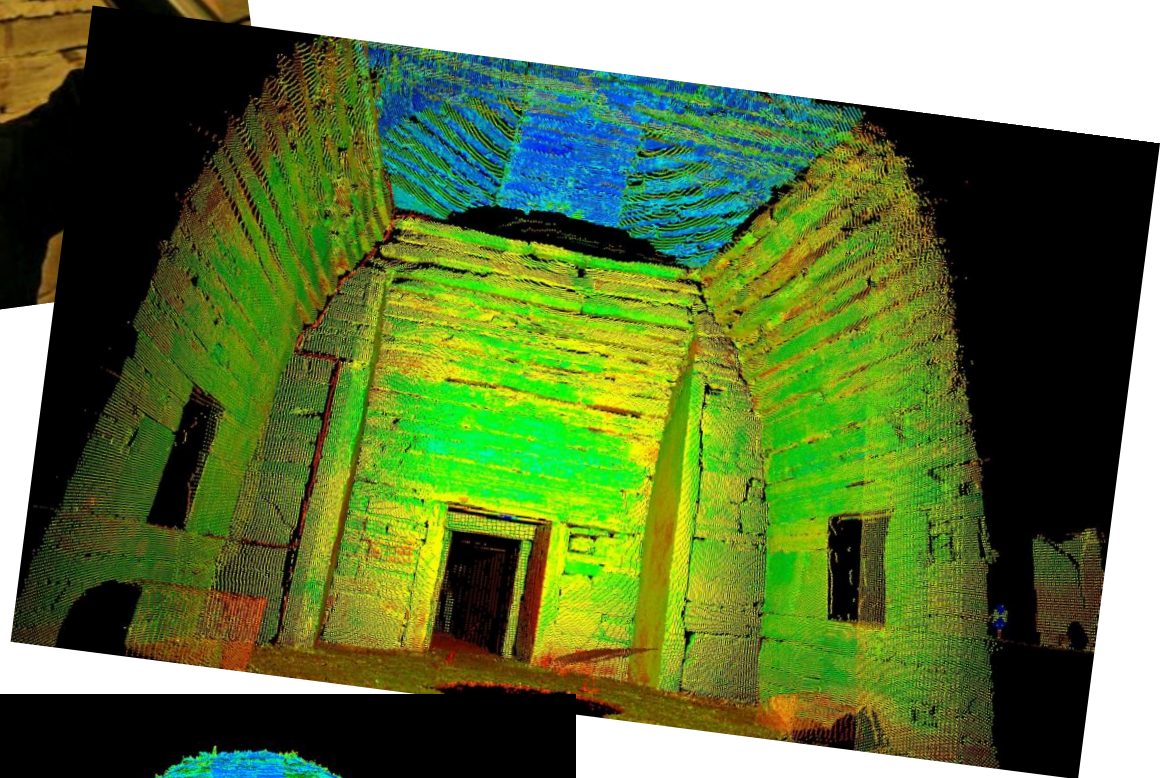
Explore 3D models of the cairn - an earthen mound covering a stone built tomb - and learn more about the history of Maeshowe.

Story of Maeshowe >

Replay the intro >

About the project >





HISTORIC  
ENVIRONMENT  
SCOTLAND

ÀRAINNEACHD  
EACHDRAIDHEIL  
ALBA