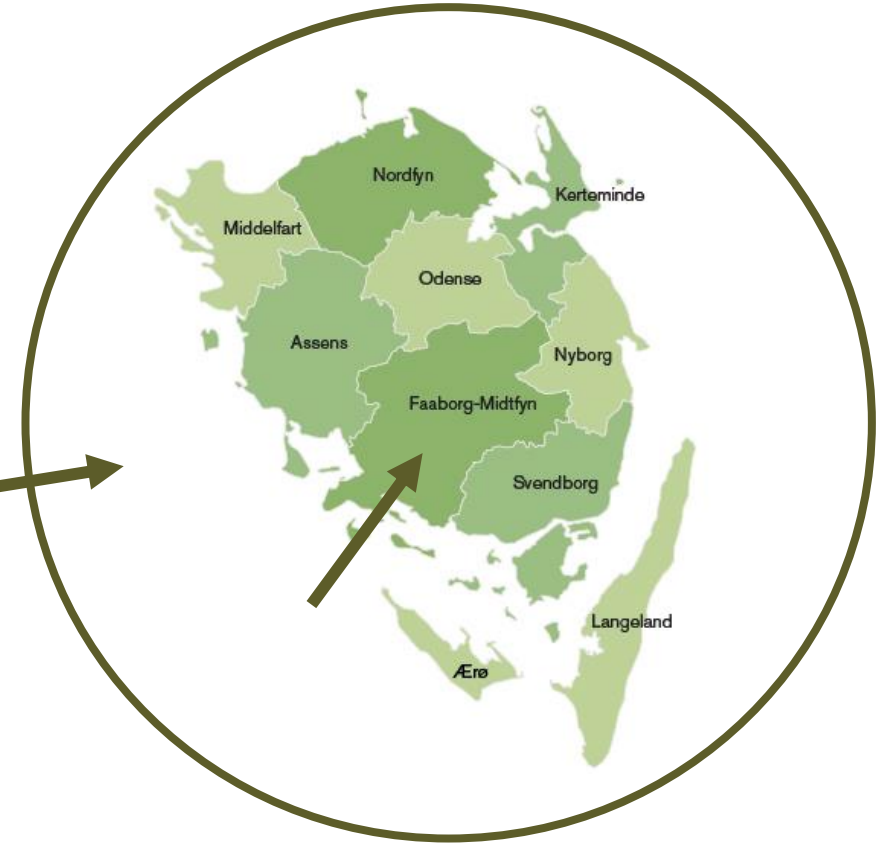


# Who are we?



Developing LIFE Nature&Biodiversity project for September 2023  
Looking for replication partners

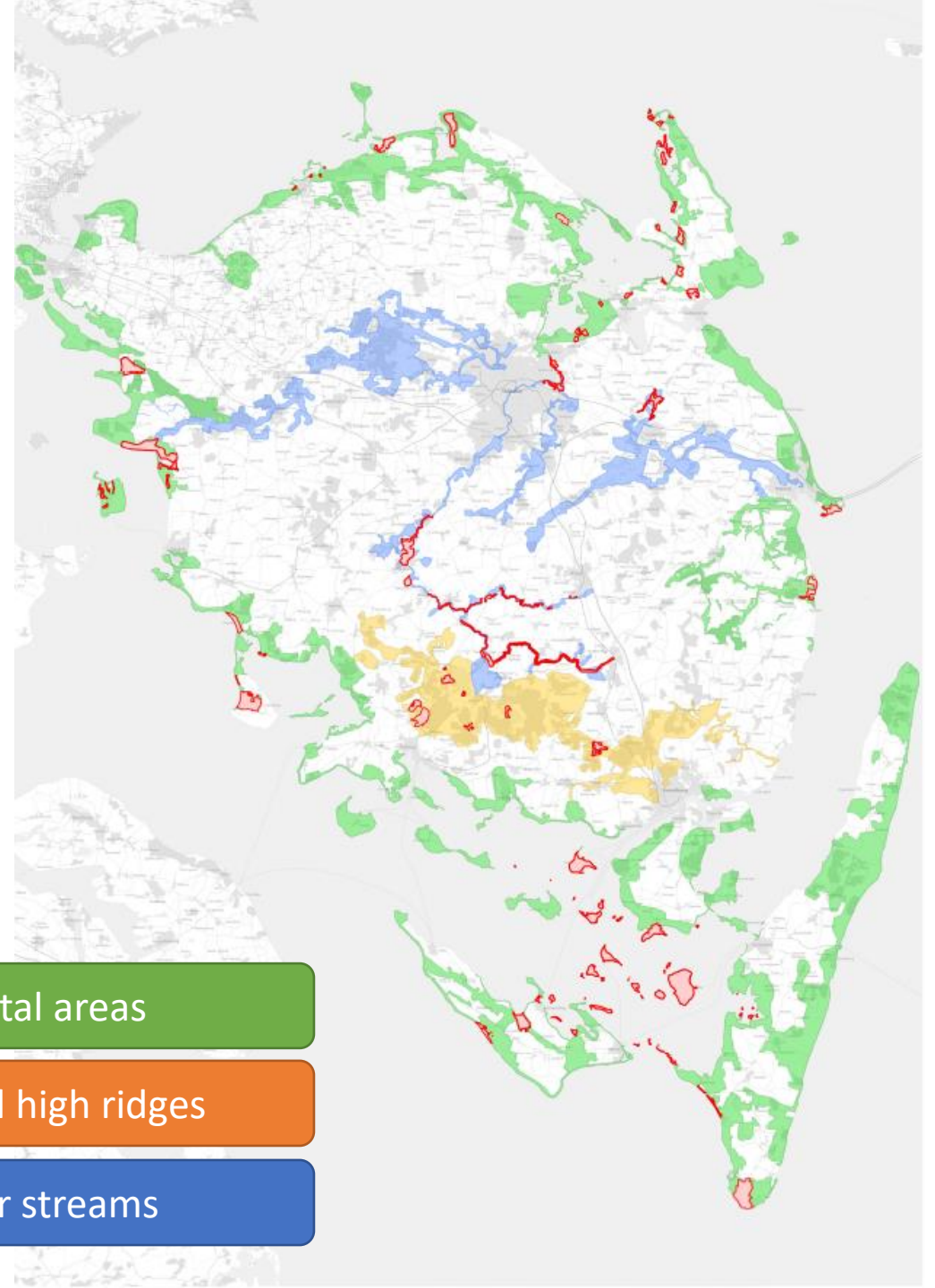
# The challenge

- The municipalities only have authority over their own area
- Nature becomes fragments
- Species cannot survive on fragmented pieces of nature
- Poor transition areas between nature types
- Need for ecological corridors
- 3 nature types that we address:

Coastal areas

Hills and high ridges

Water streams



# LIFE RING Project

The aim of **LIFE RING** is to improve the connection between various nature areas on Fyn, thereby supporting local biodiversity.

## Approach:

**1) Regional approach to nature** → *Rather than working alone, the boundaries between the 10 municipalities are removed when it comes to nature.*

**2) Holistic habitat approach** → *we employ a methodological circular approach to creating new areas of nature, where we focus on thinking in the entire life cycle of species so that we create lasting beneficial habitats for animals and plants*

**3) Common Biodiversity Strategy** → *the 10 municipalities will develop a regional biodiversity strategy, which will ensure strong regional cooperation on nature and biodiversity on a long term perspective.*

## Call Reference:

Nature and Biodiversity programme.

The project is aligned with the intervention area "Space for Nature".



- ✓ 15 Natura2000 areas
- ✓ 14 targeted species
- ✓ 11 habitat types

# Partners



- The 10 municipalities of the region
  - The Danish Nature Agency
  - Bird Protection Fund
- } sites and subsites

- The Danish Environmental Protection Agency with monitoring programme
- Natural History Museum for dissemination activities
- Forest and landscape collage for education activities
- 2 partners for propagation and release of aquatic plants, mussels and amphibians





# We are looking for partners!

- Looking replication partners
    - Public authorities, regions, municipalities, national agencies...
  - Authorities facing the same challenge of fragmented nature areas, poor connection between areas, bad transition areas between nature types, etc.
  - We wish to share results, knowledge and learning with others in the EU
  - We have a **budget** to arrange study trips, site visits, etc. for replication partners.
- 
- Letters of Intent
  - We can send a Factsheet to interested actors!
  - Do not hesitate to get in touch 😊

# Contact information



**Stine Bundgaard Hansen**

Projectleader LIFE RING project

Team Leader of Nature and Climate,  
Faaborg Midtfyn Municipality

[sthan@fmk.dk](mailto:sthan@fmk.dk)

+45 7253 2057



**Pernille Dagø**

Energi, klima og cirkulær økonomi

[pda@southdenmark.be](mailto:pda@southdenmark.be)

+32 493 562 854



**Helle Bech Sørensen-  
Hylle**

Energi, Klima og cirkulær økonomi  
Internationale kommuner

[hbh@southdenmark.be](mailto:hbh@southdenmark.be)

+32 492 330 937