

Welcome to North-East Romania



ROMANIA

ADR [®]
Agenția pentru Dezvoltare Regională
N O R D - E S T

WWW.ADRNORDEST.RO



Romania North-East

geography

TOTAL AREA: 3.685.000 ha



Mountains
28%

Hills
12%

Flat area
60%



T.A.A (Total Agricultural Area): 3.518.306 ha ^{95%}

Woods area
1.231.943 ha
33%



Not used area
34.021 ha
1%



Fallowed land
127.567 ha
4%



Agriculture area (U.A.A.)
2.124.775 ha
57%

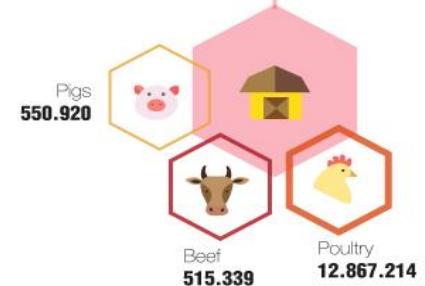
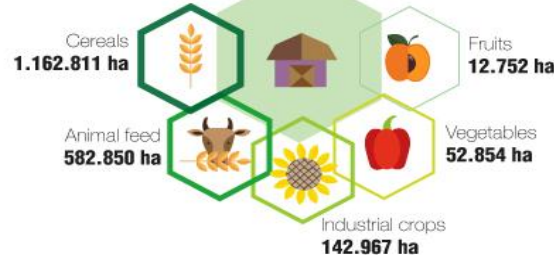


Area for pasture
491.639 ha



n° 790.901 Crop Farms
2,69 average ha
99% family managed

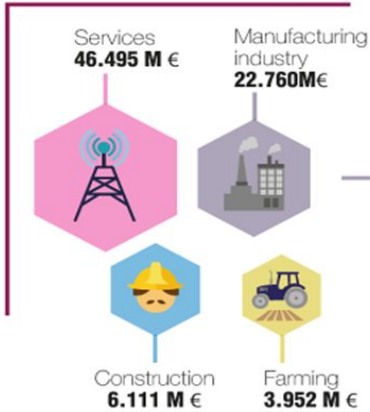
n° 496.507 Breeding Farms
31,39 head average
99% family managed



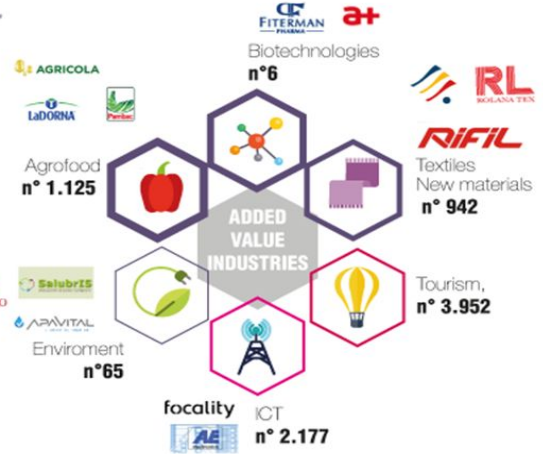
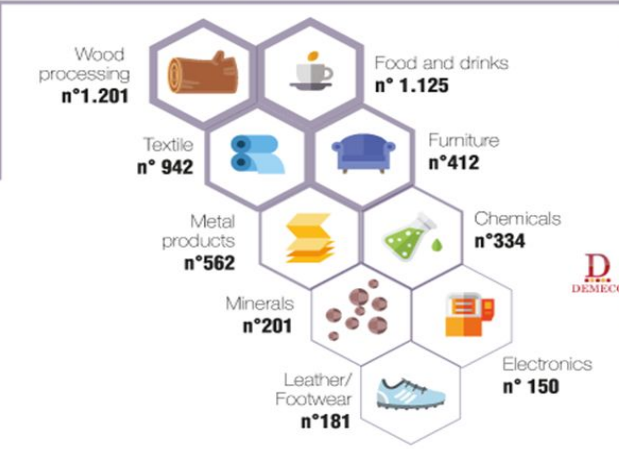
Romania North-East

economy

MAIN ECONOMIC / INDUSTRIAL SECTORS



MANUFACTURING INDUSTRY 6.104 UNIT

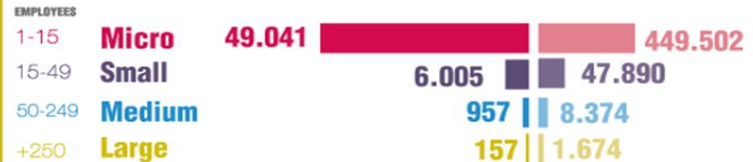


Regional GDP
(10% of national GDP) 2019

22,3
bil. €

NUMBER OF INDUSTRIES MANUFACTURING SECTORS 2014

NUMBER OF EMPLOYEES MANUFACTURING SECTORS 2014



Romania North-East

education



3 university
centers

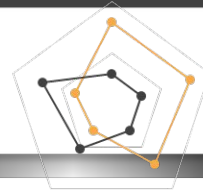
35 DOCTORAL schools
7 STATE universities
5 PRIVATE universities

Profile of doctoral schools

- ▶ AGRONOMY – 176
- ▶ CHEMICAL ENGINEERING – 151
- ▶ LANGUAGES – 134
- ▶ TEXTILES & LEATHER – 126
- ▶ CONSTRUCTIONS & INSTALLATIONS – 119
- ▶ ECONOMY - 91



1077 school
units



Structure of school units

- ▶ PRIMARY & SECONDARY – 710
- ▶ HIGHSCHOOLS – 255
- ▶ PRE-SCHOOLS – 92
- ▶ VOCATIONAL SCHOOLS – 20



(2017)
**Students in
education**

Higher education	67.772
Pre-university	461.356
Pre-school education	93.858

School dropout rates (2016)

10,7%

vocational & post secondary

1.3%

Primary, lower & upper secondary